

## Avrasya Başakşehir 2 - 3+1 İstanbul / Başakşehir

نام تراپ آ دچاو - یشورف 18,227,000 TL | 136 m2 İstanbul / Başakşehir



قاتا دادعت : 3  
اه نلاس دادعت : 1  
مامح دادعت : 2  
نام تراپا : هزاس لکش  
رفص : هزاس تیعضو  
هدافتسا دروم یاضف تیعضو : یلاخ



İsmail Can

Phone +90 542-811 80 80

Mobile Phone +90 542-811  
80 80



REALTY GALAXY

Phone +90 542-811 80 80

Mobile Phone +90 533-382  
39 79

Fax +90 212-855 74 75

Yavuz Sultan Selim Bulvarı

Büyükkçekmece /

Büyükkçekmece

34528 , İstanbul

Advert No:f-494589-1175



Advert No:f-494589-1175

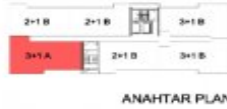
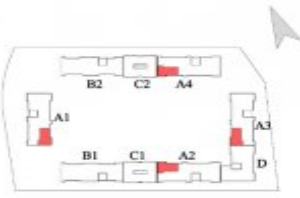


Advert No:f-494589-1175

**3+1 A**

|               |                      |
|---------------|----------------------|
| GİRİŞ HOLLÜ   | 7.01 m <sup>2</sup>  |
| SALON         | 31.22 m <sup>2</sup> |
| MUTFAK        | 13.24 m <sup>2</sup> |
| YATAK ODASI   | 10.14 m <sup>2</sup> |
| YATAK ODASI   | 9.88 m <sup>2</sup>  |
| E.YATAK ODASI | 18.93 m <sup>2</sup> |
| E.BANYO       | 4.00 m <sup>2</sup>  |
| BANYO         | 4.14 m <sup>2</sup>  |
| HOL           | 5.94 m <sup>2</sup>  |
| ÇAMAŞIR ODASI | 1.30 m <sup>2</sup>  |
| BALKON        | 6.28 m <sup>2</sup>  |

|                        |                       |
|------------------------|-----------------------|
| NET ALAN               | 105.80 m <sup>2</sup> |
| NET ALAN(balkon dahil) | 112.08 m <sup>2</sup> |
| BRÜT ALAN              | 127.28 m <sup>2</sup> |
| SATILABİLİR ALAN       | 154.72 m <sup>2</sup> |
| DEPO                   | 3.00 m <sup>2</sup>   |



**3+1 D**

|               |                      |
|---------------|----------------------|
| GİRİŞ HOLLÜ   | 4.01 m <sup>2</sup>  |
| SALON         | 33.98 m <sup>2</sup> |
| MUTFAK        | 13.24 m <sup>2</sup> |
| YATAK ODASI   | 13.81 m <sup>2</sup> |
| E.YATAK ODASI | 18.36 m <sup>2</sup> |
| E.BANYO       | 4.00 m <sup>2</sup>  |
| BANYO         | 4.14 m <sup>2</sup>  |
| ÇAMAŞIR ODASI | 1.30 m <sup>2</sup>  |
| HOL           | 5.40 m <sup>2</sup>  |
| BALKON        | 5.94 m <sup>2</sup>  |

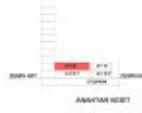
|                        |                       |
|------------------------|-----------------------|
| NET ALAN               | 121.28 m <sup>2</sup> |
| NET ALAN(balkon dahil) | 127.22 m <sup>2</sup> |
| BRÜT ALAN              | 142.72 m <sup>2</sup> |
| SATILABİLİR ALAN       | 175.12 m <sup>2</sup> |
| DEPO                   | 3.00 m <sup>2</sup>   |



**3+1 B.T2**

|               |                      |
|---------------|----------------------|
| GİRİŞ HOLLÜ   | 4.01 m <sup>2</sup>  |
| SALON         | 28.14 m <sup>2</sup> |
| MUTFAK        | 12.13 m <sup>2</sup> |
| YATAK ODASI   | 18.31 m <sup>2</sup> |
| E.YATAK ODASI | 9.78 m <sup>2</sup>  |
| E.BANYO       | 4.22 m <sup>2</sup>  |
| BANYO         | 4.00 m <sup>2</sup>  |
| HOL           | 5.40 m <sup>2</sup>  |
| ÇAMAŞIR ODASI | 1.30 m <sup>2</sup>  |
| BALKON        | 6.28 m <sup>2</sup>  |
| DAĞI TERAZI   | 25.58 m <sup>2</sup> |

|                        |                       |
|------------------------|-----------------------|
| NET ALAN               | 96.14 m <sup>2</sup>  |
| NET ALAN(balkon dahil) | 102.42 m <sup>2</sup> |
| BRÜT ALAN              | 118.18 m <sup>2</sup> |
| SATILABİLİR ALAN       | 144.82 m <sup>2</sup> |
| TAVANLI TERAZI         | 28.38 m <sup>2</sup>  |
| DEPO                   | 3.00 m <sup>2</sup>   |



**3+1 A.T2**

|               |                      |
|---------------|----------------------|
| GİRİŞ HOLLÜ   | 7.01 m <sup>2</sup>  |
| SALON         | 31.22 m <sup>2</sup> |
| MUTFAK        | 13.24 m <sup>2</sup> |
| YATAK ODASI   | 10.14 m <sup>2</sup> |
| E.YATAK ODASI | 9.88 m <sup>2</sup>  |
| E.BANYO       | 4.00 m <sup>2</sup>  |
| BANYO         | 4.14 m <sup>2</sup>  |
| HOL           | 5.94 m <sup>2</sup>  |
| ÇAMAŞIR ODASI | 1.30 m <sup>2</sup>  |
| BALKON        | 6.28 m <sup>2</sup>  |
| DAĞI TERAZI   | 25.58 m <sup>2</sup> |

|                        |                       |
|------------------------|-----------------------|
| NET ALAN               | 106.00 m <sup>2</sup> |
| NET ALAN(balkon dahil) | 112.28 m <sup>2</sup> |
| BRÜT ALAN              | 127.28 m <sup>2</sup> |
| SATILABİLİR ALAN       | 154.72 m <sup>2</sup> |
| DEPO                   | 3.00 m <sup>2</sup>   |



**3+1 E**

|               |                      |
|---------------|----------------------|
| GİRİŞ HOLLÜ   | 7.01 m <sup>2</sup>  |
| SALON         | 29.58 m <sup>2</sup> |
| MUTFAK        | 13.24 m <sup>2</sup> |
| YATAK ODASI   | 10.14 m <sup>2</sup> |
| E.YATAK ODASI | 9.88 m <sup>2</sup>  |
| E.BANYO       | 4.00 m <sup>2</sup>  |
| BANYO         | 4.14 m <sup>2</sup>  |
| HOL           | 5.94 m <sup>2</sup>  |
| ÇAMAŞIR ODASI | 1.30 m <sup>2</sup>  |
| BALKON        | 7.21 m <sup>2</sup>  |

|                        |                       |
|------------------------|-----------------------|
| NET ALAN               | 106.00 m <sup>2</sup> |
| NET ALAN(balkon dahil) | 112.28 m <sup>2</sup> |
| BRÜT ALAN              | 127.28 m <sup>2</sup> |
| SATILABİLİR ALAN       | 154.72 m <sup>2</sup> |
| DEPO                   | 3.00 m <sup>2</sup>   |

