

MEGA GARDENPARK ZEYTİNBURNU - 2+1 APARTMENT / RESIDENCE Istanbul / Zeytinburnu

For Sale - Apartment 320,000 TL | 73 m2 Istanbul / Zeytinburnu



Rooms : 2
Saloons : 1
Baths : 2
Type of Property : Apartment Flat
Property Condition : Brand New
Heating Type : Natural Gas
Property Direction : West
North
South
East



İsmail Can

Phone +90 542-811 80 80

Mobile Phone +90 542-811
80 80



REALTY GALAXY

Phone +90 542-811 80 80

Mobile Phone +90 533-382
39 79

Fax +90 212-855 74 75

Yavuz Sultan Selim Bulvarı

Büyükkçekmece /

Büyükkçekmece

34528 , Istanbul

Advert No:f-494589-891

- * Building : Purification Plant, Elevator / Lift, Earthquake Regulation Proof, Heat Proofing, Generator-Power Unit, Doorman, In Compound, Water tank, Fire ladder, Carry Lift/Elevator, Ground Survey, Reinforced Concrete, Parking, Fire Alarm,
- * Environment : Shopping Center, Kindergarten, ATM, Bank, Municipality, Gas Station, Cafe, Drugstore, Drugstore / Medical, Entertainment Center, Fair, Elementary School, Cafeteria, Nursery, Coiffure & Beauty Center, High School, Market, Game Park, Park, Police Station, Post Office, Restaurant, Health Center, District Bazaar, Veterinary, School,
- * External Properties : Sheathing,
- * Compound : Fitness Center, Security, Parking - Indoor, Social Facility, Gym, Jogging / Walking Areas, Swimming Pool (Indoor), Sauna (General), Security Camera,
- * Location : Near to Street, Near the Sea, Near to E5 Highway, City View, Close to Subway, City Center, Close to Public Transportation, Close to Minibus Route, Close to Marine Transportation, Close to Metrobus Transportation, Close to Eurasia Tunnel, Close to Eurasia Tunnel, Close to Marmaray, Close to TEM, Close to the tram, Close to City Center,

Advert No:f-494589-891



Advert No:f-494589-891



**B1 BLOK
2+1
TİP3**



2+1 TİP-3

1 ANTRÉ	7.45 m ²
2 SALON	21.50 m ²
3 MÜFÁK	9.45 m ²
4 YATAK ODASI	9.00 m ²
5 E. YATAK ODASI	14.85 m ²
6 E. BANYO	3.15 m ²
7 BANYO	3.43 m ²
8 CAMAŞIR O.	0.75 m ²
9 BALKON	3.45 m ²

NET ALAN (HALI ÖLÇÜSÜ) : 73.03 M²
BRÜT ALAN (KATTAKI ÖRTAK ALANLAR) : 96.70 M²
GENEL BRÜT (OTOPARK ALANLARI DAHİL) : 133.52 M²



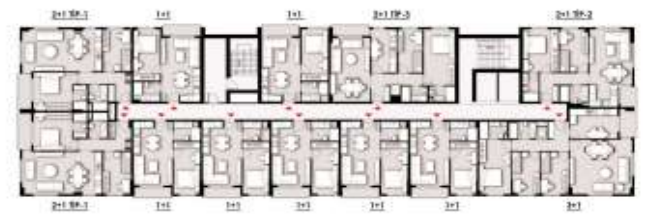
**B1 BLOK
1+1**



1+1

1 SALON	11.00 m ²
2 YATAK ODASI	11.00 m ²
3 MÜFÁK	3.00 m ²
4 BANYO	2.00 m ²

NET ALAN (HALI ÖLÇÜSÜ) : 26.00 M²
BRÜT ALAN (KATTAKI ÖRTAK ALANLAR) : 33.00 M²
GENEL BRÜT (OTOPARK ALANLARI DAHİL) : 75.00 M²



**B1 BLOK
2+1
TİP2**



2+1 TİP-2

1 ANTRÉ	7.45 m ²
2 SALON	21.50 m ²
3 MÜFÁK	9.45 m ²
4 YATAK ODASI	9.00 m ²
5 E. YATAK ODASI	14.85 m ²
6 E. BANYO	3.15 m ²
7 BANYO	3.43 m ²
8 CAMAŞIR O.	0.75 m ²
9 BALKON	3.45 m ²

NET ALAN (HALI ÖLÇÜSÜ) : 73.03 M²
BRÜT ALAN (KATTAKI ÖRTAK ALANLAR) : 96.70 M²
GENEL BRÜT (OTOPARK ALANLARI DAHİL) : 133.52 M²



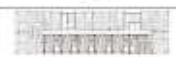
**B1 BLOK
1+1**



1+1

1 SALON	11.00 m ²
2 YATAK ODASI	11.00 m ²
3 MÜFÁK	3.00 m ²
4 BANYO	2.00 m ²

NET ALAN (HALI ÖLÇÜSÜ) : 26.00 M²
BRÜT ALAN (KATTAKI ÖRTAK ALANLAR) : 33.00 M²
GENEL BRÜT (OTOPARK ALANLARI DAHİL) : 75.00 M²



Advert No:f-494589-891

**B1 BLOK
3-1 DAIRE**



2x1

1. YATIRIM	850.000 TL
2. KİRALAMA	850.000 TL
3. KİRALAMA	850.000 TL
4. KİRALAMA	850.000 TL
5. KİRALAMA	850.000 TL
6. KİRALAMA	850.000 TL
7. KİRALAMA	850.000 TL
8. KİRALAMA	850.000 TL
9. KİRALAMA	850.000 TL
10. KİRALAMA	850.000 TL

METRE KARE (M²) VE KİRALAMA (TL) TABLOSU
M² KİRALAMA (TL) VE KİRALAMA (TL) TABLOSU
KİRALAMA (TL) VE KİRALAMA (TL) TABLOSU



**B1 BLOK
2-1 TİPİ**




2x1 TİPİ

1. YATIRIM	850.000 TL
2. KİRALAMA	850.000 TL
3. KİRALAMA	850.000 TL
4. KİRALAMA	850.000 TL
5. KİRALAMA	850.000 TL
6. KİRALAMA	850.000 TL
7. KİRALAMA	850.000 TL
8. KİRALAMA	850.000 TL
9. KİRALAMA	850.000 TL
10. KİRALAMA	850.000 TL

METRE KARE (M²) VE KİRALAMA (TL) TABLOSU
M² KİRALAMA (TL) VE KİRALAMA (TL) TABLOSU
KİRALAMA (TL) VE KİRALAMA (TL) TABLOSU



PROF. DR. AZİZ ENGİN CAĐDESİ



1. BLOK 2. BLOK 3. BLOK 4. BLOK

ÇİRPİCİ DERESİ