

RAMS BEYOND ISTANBUL

TURKEY / ISTANBUL / SARIYER

**Project Status:
Completed**

**Development Area:
179,022 m²**



REALTY GALAXY
Yavuz Sultan Selim Bulvarı
Istanbul / Büyükdere / Büyükdere
Phone:+90 542-811 80 80
Mobile Phone:+90 533-382 39 79



İsmail Can
Broker / Owner
Mobile Phone:+90 542-811 80 80
Phone:+90 542-811 80 80

New |

Seafont Properties | Investment Properties | Nature & Mountain Properties | Custom Build Properties | Luxury Property |

It's Beyond Imagination up and up over the clouds it's the last tower in Maslak, It's Rams Beyond Project the one and supreme high class opportunity you will ever have in Istanbul.

Luxury Residential and Investment Project in Maslak - Heart of European Istanbul Located in one of the most important commercial and investment districts of European Istanbul, Maslak, this project features a modern and unique architectural design that enhances luxurious living. The project consists of a 52-story tower offering residential and investment apartments with panoramic views of the Bosphorus and Belgrad Forest. The top floors feature rotating restaurants providing a 360-degree view.

Beyond Limits: The Most Prime Location in Istanbul

Hilton Maslak (1 min)

ITÜ Ayazaga Metro Station (1 min)

Sapphire Mall Center (3-6 mins)

Nef Stadium (4 mins)

Zorlu Shopping Mall (6-12 mins)

Borsa Istanbul (5-8 mins)

15 July Martyrs Bridge (10-18 mins)

Fatih Sultan Mehmet Bridge (8-12 mins)

Universities : Istanbul Technical University (3 - 5 mins) Isik University (4 mins) Istanbul University Auzef (2 mins) Beykent University (4-7 mins) Nisantasi University (6-12 mins)

Hospitals : Maslak Acıbadem Hospital (5-8 mins) Medical International Hospital (20-28 mins) Private Maslak Medical Center (4-7 mins) Liv Hospital Vadi (7-12 mins)

Hotels : Sheraton Istanbul Levent (4 mins) Wyndham Grand Istanbul (7 mins) Le Meridien Etiler (7 mins) Somerset Maslak Istanbul (8 mins)

Primary Schools : Isik Schools (3 mins) Bilfen Maslak School (7-12 mins) Enka Schools (5-9 mins) Maslak Educational Sciences, Secondary School (4-6 mins)

Shopping Malls : Istinye Park Mall (5-9 mins) Kanyon Mall (6-9 mins) Vadi Istanbul Mall (7 mins)

Transportations : Kaan Heliport (8-12 mins) Istanbul Airport (22-30 mins) Sabiha Gökçen Airport (28-40 mins)

Green Areas : Park Orman Nature Park (6-9 mins) Atatürk Kent Forest (6-10 mins) Emirgan Grove (6-12 mins)

Sports - Activity and Entertainment : Uniq Istanbul (3 mins) Tim Show Center (5-9 mins) Sakıp Sabacı Museum (7-14 mins)

Open Area (m²) : 179,022

Block Number : 3

Land m² : 11,067

LOCATION :

By Street, Near to Street, Close to Airport, Close to City Center,

ENVIRONMENT :

Shopping Center, Bank, Gas Station, Entertainment Center, Hospital / Health facility, School (Education facility), Polyclinic, Restaurant, Movie Theater, Close to Eurasia Tunnel,

INFRASTRUCTURE :

Earthquake Regulation Proof, Earthquake Resistant, Ground Survey,

COMPOUND :

Security, Parking - Outdoor, Parking - Indoor, Meeting Room, Security System, Indoor Garrage, Fire Alarm, Security Camera,

CONSTRUCTION PROPERTIES :

Heat Proofing, High Entrance, High Ceiling,

SCENERY :

Bosphorus View, Sea View, Nature View, City View,

FACILITY ACTIVITIES :

Fitness Center, Social Facility, Squash, Swimming Pool, Sauna (General), Indoor Restaurant, Turkish Hammam, Valet Services, SPA,

Product Documents

[RAMS_Beyond.pdf](#) | [Rams_Beyond_Russian_wo.pdf](#) | [Rams_Beyond_Persien_wo.pdf](#) | [Rams_Beyond_English.pdf](#) | [Rams_Beyond_Arabic_wo.pdf](#) |

ESTATE TYPES



851,000 \$

80 m² , 1 + 1
For Sale, Residence



37,646,000 \$

295 m² , 3 + 1
For Sale, Residence



2,047,700 \$

205 m² , 3 + 1
For Sale, Residence



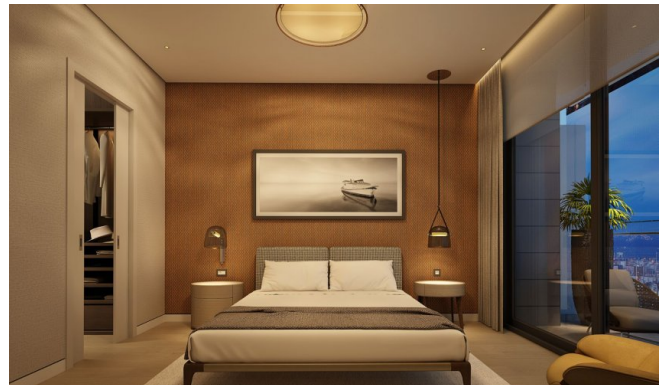
2,310,000 \$

187 m² , 2 + 1
For Sale, Residence



1,700,000 \$

147 m² , 2 + 1
For Sale, Residence



1,977,000 \$

155 m² , 1 + 1
For Sale, Residence

