

LOTUS YALI

TURKEY / ISTANBUL / BÜYÜKÇEKMECE

**Project Status:
Completed****Price Range:
16,630,000 - 28,475,000 TL**

Lotus Yalı: A Symphony of Elegance by the Sea

Where Nature Meets Luxury

Introduction

Nestled in the vibrant district of Beylikdüzü, Istanbul, Lotus Yalı redefines modern living by seamlessly blending natural beauty with architectural brilliance. Inspired by the lotus flower—symbolizing purity, renewal, and serenity—this project offers a sanctuary amid the city's hustle. Spanning 8,600 square meters, Lotus Yalı invites you to experience a lifestyle rooted in tranquility and sophistication.

Project Concept: Harmony with Nature

Lotus Yalı embraces the essence of nature with 75% of its land dedicated to lush green landscapes. Its eight three-story blocks are designed to maximize the sea view, ensuring every home opens to the serene blues of the Marmara Sea and the vibrant greens of nature. This thoughtful design transforms every day into a retreat-like experience.

Architectural Brilliance and Amenities

The project features a range of meticulously designed apartments, catering to diverse family sizes and lifestyle preferences:

- 3+1 Apartments: Spacious layouts ranging from 146.35 m² to 188.10 m².
 - 5+2 Duplexes: Expansive homes spanning 339.50 m², perfect for larger families or those seeking additional luxury.
- Each residence boasts:
- Premium finishes with high-quality materials.
 - Panoramic windows that invite natural light and showcase breathtaking sea views.
 - Modern kitchens and elegantly crafted bathrooms that combine functionality with aesthetics.
- Amenities include a fitness center, sauna, indoor swimming pool, Turkish bath, and landscaped gardens, providing residents with unparalleled leisure and wellness options.

Strategic Location

Lotus Yalı enjoys a prime location, seamlessly connecting urban convenience with coastal serenity. Situated near major transportation hubs like the E-5 highway and Metrobus, residents are minutes away from shopping centers such as Marmara Park and Torium, reputable hospitals, and vibrant marinas like West Istanbul Marina.

Lifestyle and Design

Designed with a minimalist yet luxurious aesthetic, Lotus Yalı radiates elegance inside and out. From its harmonious color palette to its eco-conscious construction, every detail enhances the living experience. The expansive terraces and balconies invite you to unwind while enjoying the changing colors of the seasons.

A Natural Haven

Lotus Yalı celebrates the calming essence of water and greenery, creating an oasis in Istanbul. Its thoughtful landscape design integrates diverse flora, creating a refreshing and peaceful environment. Residents can rejuvenate daily, surrounded by the sights and sounds of nature.

Conclusion

Lotus Yalı is more than a residential project; it is a vision of harmonious living. Combining the tranquility of nature, the luxury of modern amenities, and the vibrancy of Istanbul, it promises a lifestyle that is both serene and enriching. Step into Lotus Yalı and discover where nature meets luxury—a place you can truly call home.

Block Number : 8

LOCATION :

Near the Sea, Near to E5 Haighway, Close to Metrobus Transportation,

ENVIRONMENT :

Gas Station, Drugstore / Medical, Hospital / Health facility, High School, Patisserie & Bakery, Post Office, Restaurant, Health Center, Dry-Cleaning,

INFRASTRUCTURE :

Earthquake Regulation Proof, Earthquake Resistant, Ground Survey,

COMPOUND :

Security, Intercom, Cable TV, Cable TV / satellite, Parking - Outdoor, Parking - Indoor, Ground Heating, Security System, Indoor Garrage, Suitable for Disabled, Fire Alarm, Security Camera,

CONSTRUCTION PROPERTIES :

Purification Plant, Granite Basement, Heat Proofing, High Entrance, Sound Isolation,

SCENERY :

Sea View, Nature View,

FACILITY ACTIVITIES :

Fitness Center, Gym, Swimming Pool, Sauna (General), Turkish Hammam, SPA,

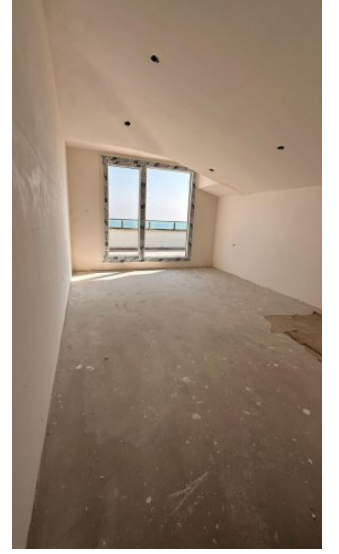
ESTATE TYPES



16,630,000 TL

188 m² , 3 + 1

For Sale, Apartment



28,475,000 TL

339 m² , 5 + 2

**For Sale,
Apartment**



