

## Avrasya Başakşehir 2 - 2+1 İstanbul / Başakşehir

For Sale - Apartment 13,600,000 TL | 112 m2 İstanbul / Başakşehir



# Rooms : 2

# Saloons : 1

# Baths : 2

Type of Property : Apartment Flat

Property Condition : Brand New

Usage Status : Empty



İsmail Can

Phone +90 542-811 80 80

Mobile Phone +90 542-811  
80 80



REALTY GALAXY

Phone +90 542-811 80 80

Mobile Phone +90 533-382  
39 79

Fax +90 212-855 74 75

Yavuz Sultan Selim Bulvarı

Büyükkçekmece /

Büyükkçekmece

34528 , İstanbul

Advert No:f-494589-1174



Advert No:f-494589-1174

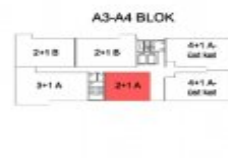
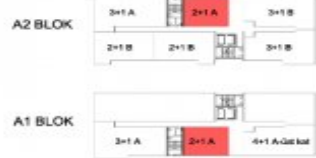


Advert No:f-494589-1174

**2+1 A**

GİRİŞ HOLLÜ	5.36 m <sup>2</sup>
SALON+MUTFAK	19.10 m <sup>2</sup>
YATAK ODASI	9.75 m <sup>2</sup>
E.YATAK ODASI	12.87 m <sup>2</sup>
BANYO	4.76 m <sup>2</sup>
HOL	4.67 m <sup>2</sup>
ÇAMAŞIR ODASI	1.90 m <sup>2</sup>
BALKON	3.80 m <sup>2</sup>

NET ALAN	58.42 m <sup>2</sup>
NET ALAN(balkon dahil)	62.22 m <sup>2</sup>
BRÜT ALAN	71.48 m <sup>2</sup>
SATILABİLİR ALAN	86.89 m <sup>2</sup>
DEPO	3.00 m <sup>2</sup>



**2+1 D.T**

GİRİŞ HOLLÜ	4.00 m <sup>2</sup>
SALON	16.76 m <sup>2</sup>
MUTFAK	3.74 m <sup>2</sup>
YATAK ODASI	8.80 m <sup>2</sup>
E.YATAK ODASI	13.82 m <sup>2</sup>
BANYO	4.01 m <sup>2</sup>
HOL	3.89 m <sup>2</sup>
TERAS	20.57 m <sup>2</sup>

NET ALAN	66.41 m <sup>2</sup>
NET ALAN(balkon dahil)	74.21 m <sup>2</sup>
SATILABİLİR ALAN	86.80 m <sup>2</sup>
TAHESİLİ TERAS	20.57 m <sup>2</sup>
DEPO	3.00 m <sup>2</sup>



**2+1 C**

GİRİŞ HOLLÜ	7.22 m <sup>2</sup>
SALON	16.24 m <sup>2</sup>
MUTFAK	8.80 m <sup>2</sup>
YATAK ODASI	8.78 m <sup>2</sup>
E.YATAK ODASI	12.28 m <sup>2</sup>
BANYO	4.88 m <sup>2</sup>
HOL	1.88 m <sup>2</sup>
BALKON	3.03 m <sup>2</sup>

NET ALAN	66.01 m <sup>2</sup>
NET ALAN(balkon dahil)	68.20 m <sup>2</sup>
BRÜT ALAN	78.84 m <sup>2</sup>
SATILABİLİR ALAN	86.34 m <sup>2</sup>
DEPO	3.00 m <sup>2</sup>



**2+1 B**

GİRİŞ HOLLÜ	7.47 m <sup>2</sup>
SALON	20.88 m <sup>2</sup>
MUTFAK	8.86 m <sup>2</sup>
YATAK ODASI	16.77 m <sup>2</sup>
E.BANYO	6.52 m <sup>2</sup>
BANYO	4.16 m <sup>2</sup>
ÇAMAŞIR ODASI	2.08 m <sup>2</sup>
BALKON	4.88 m <sup>2</sup>

NET ALAN	61.03 m <sup>2</sup>
NET ALAN(balkon dahil)	66.91 m <sup>2</sup>
BRÜT ALAN	87.39 m <sup>2</sup>
SATILABİLİR ALAN	107.22 m <sup>2</sup>
DEPO	3.00 m <sup>2</sup>



**2+1 E.T1**

GİRİŞ HOLLÜ	6.22 m <sup>2</sup>
SALON	20.87 m <sup>2</sup>
MUTFAK	10.20 m <sup>2</sup>
YATAK ODASI	8.74 m <sup>2</sup>
E.BANYO	4.10 m <sup>2</sup>
BANYO	4.33 m <sup>2</sup>
HOL	3.23 m <sup>2</sup>
ZEMİN TERAS	19.77 m <sup>2</sup>

NET ALAN	58.1 m <sup>2</sup>
BRÜT ALAN	89.70 m <sup>2</sup>
SATILABİLİR ALAN	107.80 m <sup>2</sup>
TAHESİLİ TERAS	19.77 m <sup>2</sup>
DEPO	3.00 m <sup>2</sup>



