

## SAMANA RESORTS DUBAI

UNITED ARAB EMIRATES / DUBAI / DUBAI PRODUCTION CIT

**Completion Date:**  
06 / 2028

**Price Range:**  
183,000 - 422,000 \$

**Development Area:**  
4,200 m<sup>2</sup>



**Opportunity | New |**

**Luxury Property |**

## **Samana Resorts: A Paradigm of Luxury and Tranquility**

*Where Every Day Feels Like a Vacation*

### **Introduction**

Samana Resorts redefines the essence of luxury living, seamlessly blending elegance, comfort, and innovation. Strategically located in Dubai, this stunning development is designed to offer residents a serene oasis amidst the city's vibrant energy. From lush landscaped gardens to state-of-the-art amenities, Samana Resorts ensures a lifestyle where every detail is crafted for excellence. With a commitment to superior architecture and mindful living, this project stands as a testament to luxurious resort-style experiences.

### **Location and Surroundings**

Nestled in Dubai Production City, Samana Resorts enjoys a prime location with seamless connectivity to key areas, including Sheikh Mohammed Bin Zayed Road. Residents benefit from effortless access to prominent business hubs, leisure destinations, and essential amenities.

Nearby Destinations:

- 3-5 minutes: Kids Kingdom Nursery, City Centre Me'aisem.

- 10-15 minutes: Jumeirah Golf Estates, GEMS United School.

- 15-20 minutes: Dubai Marina, JBR Beach.

- 25-30 minutes: Dubai Mall, Burj Khalifa, Downtown Dubai.

This location offers the perfect balance of convenience and tranquility, making it a desirable destination for families and professionals alike.

### **Project Facilities**

Samana Resorts provides a curated selection of world-class amenities, each designed to elevate everyday living:

- Infinity Pools and Private Pools: Perfect for relaxation and leisure.

- Wellness Centers and Spas: Spaces to rejuvenate and recharge.

- Fitness Facilities: State-of-the-art equipment and personal training zones.

- Lush Landscapes: Thoughtfully designed gardens and terraces for peaceful strolls.

- Communal Areas: Cozy lounges and serene outdoor spaces to foster connection and mindfulness.

### **Housing Types and Finishes**

Samana Resorts offers a variety of thoughtfully designed housing units, each combining elegance with functionality:

1. Studio Apartments with private pools.

2. One-Bedroom Apartments with options for additional storage or maid's quarters, all featuring private pools.

3. Two-Bedroom Apartments with private pools.

Each residence is characterized by:

- Open layouts with expansive windows for natural light.

- Premium finishes that balance aesthetics and durability.

- Elegant touches, from high-quality materials to sophisticated interiors, creating a warm and luxurious ambiance.

### **Conclusion**

Samana Resorts is more than just a place to live; it is a sanctuary where residents can embrace tranquility and luxury in equal measure. With its impeccable design, strategic location, and unmatched amenities, this development invites you to redefine your lifestyle. Whether for families seeking a serene retreat or individuals craving a vibrant and connected community, Samana Resorts promises a life that transcends the ordinary.

Welcome to Samana Resorts—where every moment is a celebration of luxury and serenity.

## **ENVIRONMENT :**

**Shopping Center, Bank, Gas Station, Drugstore / Medical, Hospital / Health facility, Firefighting, Nursery, Coiffure & Beauty Center, High School, School (Education facility), Patisserie & Bakery, Polyclinic, Restaurant, Health Center, Dry-Cleaning, Aquapark,**

## **INFRASTRUCTURE :**

**Earthquake Regulation Proof, Earthquake Resistant, Ground Survey,**

## **COMPOUND :**

**Security, Pressure Tank, Intercom, Generator-Power Unit, Cable TV, Cable TV / satellite, Doorman, Central Air Conditioning, Parking - Outdoor, Parking - Indoor, Meeting Room, Carry Lift/Elevator, Security System, Indoor Garrage, Suitable for Disabled, Fire Alarm, Security Camera,**

## **CONSTRUCTION PROPERTIES :**

**Built-in White Goods Kitchen, Purification Plant, Heat Proofing, Fire ladder, High Entrance, Sound Isolation,**

## **SCENERY :**

**Sea View, City View,**

## **FACILITY ACTIVITIES :**

**Children Swimming Pool, Fitness Center, Social Facility, Gym, Swimming Pool, Swimming Pool (Indoor), Sauna (General), Indoor Restaurant, Pool Bar, Assistant Service, Valet Services, SPA,**

## **Product Documents**

**[SAMANA\\_RESORTS\\_FACTSHEET.pdf](#) | [SAMANA\\_RESORTS\\_FLOOR\\_PLAN.pdf](#) |**

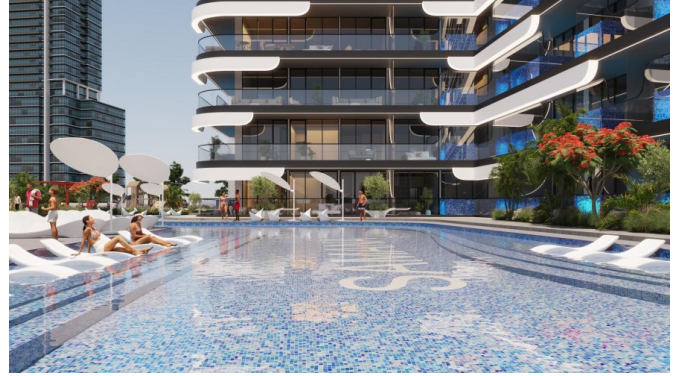
**ESTATE TYPES**



**183,000 \$**

**39 m<sup>2</sup>**

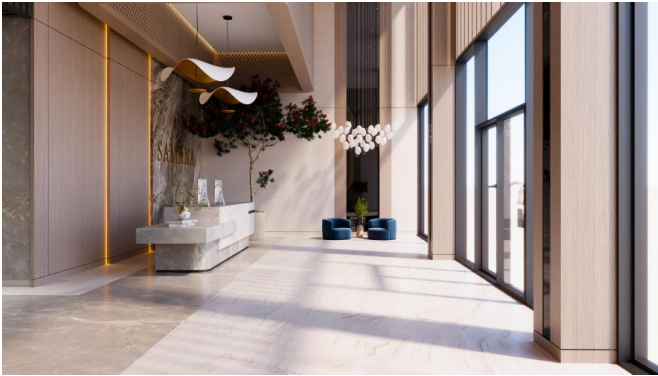
**For Sale, Apartment**



**294,000 \$**

**74 m<sup>2</sup>, 1 + 1**

**For Sale, Apartment**



**422,000 \$**

**111 m<sup>2</sup>, 2 + 1**

**For Sale, Apartment**

